



NATA LIGHTING CO.,LTD.  
www.nata.cn  
Email:info@nata.com  
Tel:+86-750-3770000 Fax:+86-750-3771111  
Address:380JinOu Road,GaoXin Zone,Jiang Men City,Guangdong,China

NT

Client:

LumCAT: 1-1384-L

Luminaire: 92.70.410.00

Report No: 20231106-B018

Ballast type: AC

Test No: 20231106-C018

Voltage(V): 35.110

LampCAT: Fortimo\_SLM\_C\_1203

Current(A): 0.246

Lamp flux(lm): 1385.0

Power (W): 8.637

Number of Lamps: 1

PF: 0.000

Length(mm): 0

Width(mm): 0

Phm Type: C

Height(mm): 0

### Photometric Results

Lumens(lm): 1264.89, Efficiency(%): 91.33% , Luminous Efficacy(lm/W): 146.45

Central intensity(cd): 1971.695, Maximum intensity(cd): 1971.695

Angle of maximum intensity: C=0.0  $\gamma$ =0.0

Beam Angle(50%Imax): [C0/180]Total=50.0

[C90/270]Total=50.0

Field angle(10%Imax): [C0/180]Total=69.2

[C90/270]Total=69.2

Beam angle of C0 plane : 50.04

Average BeamAngle(IEC 61341):50.04

Maximum s/h(1/2): C0\_180=0.79 C90\_270=0.79

Maximum s/h(1/4): C0\_180=0.75 C90\_270=0.75

Up flux rate of lamp(%): 0.00%

Down flux rate of lamp(%): 91.33%

Up flux rate of LUM(%): - -

Down flux rate of LUM(%): 100.00%

CIE Type : Direct lighting

Output flux ratio in  $\pi$  solid angle : 97.946%

Equipment: GMS1980  
Temperature(°C): 0.0

Date: 2023/11/06  
Humidity(%): 0.0%

Operator: NT07  
Distance(m): 7.44

$\gamma(^{\circ})$	Average I(cd)	Zonal F(lm)	Sum F(lm)	Eff Flux(%)	Eff Sum(%)
0.0	1971.695	0.000	0	0.00%	0.00%
1.0	1970.934	1.886	1.886	0.14%	0.15%
2.0	1967.059	5.652	7.539	0.41%	0.60%
3.0	1961.247	9.395	16.934	0.68%	1.34%
4.0	1954.605	13.108	30.041	0.95%	2.38%
5.0	1943.257	16.768	46.81	1.21%	3.70%
6.0	1933.986	20.376	67.186	1.47%	5.31%
7.0	1919.594	23.919	91.105	1.73%	7.20%
8.0	1898.490	27.325	118.43	1.97%	9.36%
9.0	1877.317	30.601	149.031	2.21%	11.78%
10.0	1853.654	33.764	182.795	2.44%	14.45%
11.0	1824.870	36.756	219.551	2.65%	17.36%
12.0	1792.557	39.544	259.095	2.86%	20.48%
13.0	1753.256	42.080	301.175	3.04%	23.81%
14.0	1709.942	44.329	345.503	3.20%	27.31%
15.0	1664.967	46.332	391.835	3.35%	30.98%
16.0	1615.356	48.066	439.901	3.47%	34.78%
17.0	1558.827	49.431	489.332	3.57%	38.69%
18.0	1504.442	50.507	539.839	3.65%	42.68%
19.0	1442.100	51.264	591.102	3.70%	46.73%
20.0	1371.178	51.491	642.593	3.72%	50.80%
21.0	1281.533	50.937	693.531	3.68%	54.83%
22.0	1184.761	49.561	743.092	3.58%	58.75%
23.0	1142.740	48.837	791.929	3.53%	62.61%
24.0	1068.075	48.336	840.265	3.49%	66.43%
25.0	987.640	46.742	887.008	3.37%	70.13%
26.0	900.209	44.563	931.571	3.22%	73.65%
27.0	809.740	41.834	973.405	3.02%	76.96%
28.0	713.197	38.558	1011.963	2.78%	80.00%
29.0	612.688	34.689	1046.651	2.50%	82.75%
30.0	517.307	30.510	1077.161	2.20%	85.16%
31.0	422.812	26.162	1103.323	1.89%	87.23%
32.0	343.628	21.958	1125.281	1.59%	88.96%
33.0	269.669	18.068	1143.349	1.30%	90.39%
34.0	225.753	14.993	1158.342	1.08%	91.58%
35.0	176.723	12.499	1170.841	0.90%	92.56%
36.0	111.192	9.167	1180.008	0.66%	93.29%
37.0	87.210	6.471	1186.479	0.47%	93.80%

$\gamma(^{\circ})$	Average I(cd)	Zonal F(lm)	Sum F(lm)	Eff Flux(%)	Eff Sum(%)
38.0	72.354	5.326	1191.805	0.38%	94.22%
39.0	61.249	4.560	1196.365	0.33%	94.58%
40.0	53.603	4.006	1200.371	0.29%	94.90%
41.0	46.656	3.570	1203.941	0.26%	95.18%
42.0	41.529	3.204	1207.145	0.23%	95.43%
43.0	36.789	2.901	1210.046	0.21%	95.66%
44.0	33.088	2.637	1212.684	0.19%	95.87%
45.0	29.759	2.415	1215.099	0.17%	96.06%
46.0	27.061	2.222	1217.321	0.16%	96.24%
47.0	24.736	2.060	1219.381	0.15%	96.40%
48.0	22.909	1.926	1221.307	0.14%	96.55%
49.0	21.366	1.818	1223.125	0.13%	96.70%
50.0	20.080	1.728	1224.853	0.12%	96.83%
51.0	18.882	1.648	1226.502	0.12%	96.97%
52.0	17.865	1.577	1228.079	0.11%	97.09%
53.0	16.973	1.515	1229.594	0.11%	97.21%
54.0	16.170	1.461	1231.055	0.11%	97.33%
55.0	15.430	1.411	1232.466	0.10%	97.44%
56.0	14.779	1.365	1233.831	0.10%	97.54%
57.0	14.184	1.324	1235.155	0.10%	97.65%
58.0	13.638	1.287	1236.441	0.09%	97.75%
59.0	13.146	1.252	1237.694	0.09%	97.85%
60.0	12.676	1.220	1238.914	0.09%	97.95%
61.0	12.247	1.189	1240.103	0.09%	98.04%
62.0	11.860	1.162	1241.265	0.08%	98.13%
63.0	11.493	1.136	1242.4	0.08%	98.22%
64.0	11.119	1.110	1243.51	0.08%	98.31%
65.0	10.794	1.084	1244.594	0.08%	98.40%
66.0	10.441	1.059	1245.654	0.08%	98.48%
67.0	10.164	1.036	1246.69	0.07%	98.56%
68.0	9.881	1.015	1247.705	0.07%	98.64%
69.0	9.625	0.995	1248.7	0.07%	98.72%
70.0	9.348	0.974	1249.675	0.07%	98.80%
71.0	9.099	0.953	1250.628	0.07%	98.87%
72.0	8.836	0.933	1251.561	0.07%	98.95%
73.0	8.601	0.912	1252.473	0.07%	99.02%
74.0	8.351	0.891	1253.364	0.06%	99.09%
75.0	8.095	0.869	1254.233	0.06%	99.16%

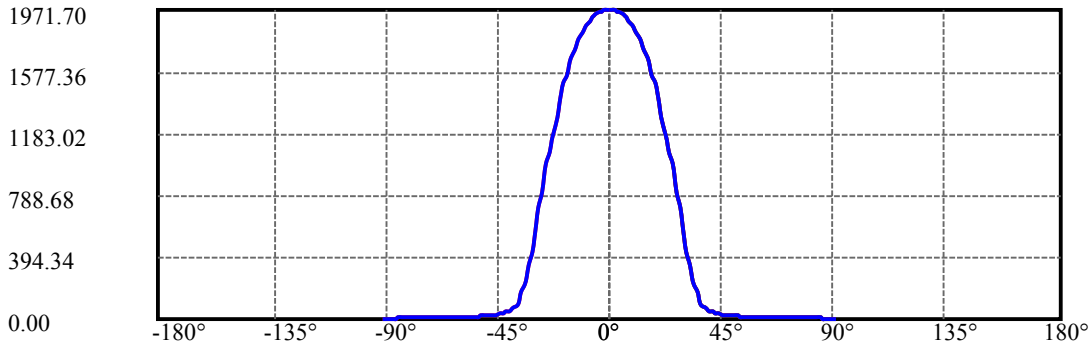
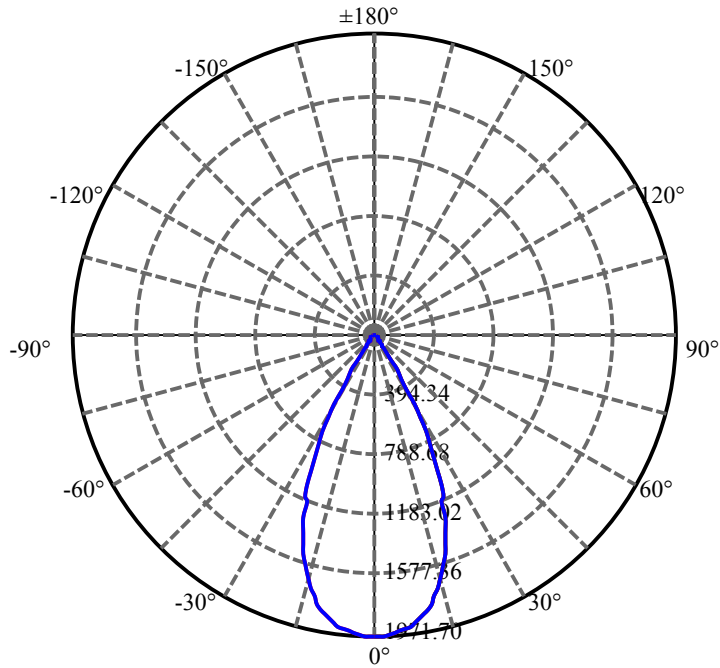
$\gamma(^{\circ})$	Average I(cd)	Zonal F(lm)	Sum F(lm)	Eff Flux(%)	Eff Sum(%)
76.0	7.853	0.847	1255.079	0.06%	99.22%
77.0	7.625	0.825	1255.905	0.06%	99.29%
78.0	7.410	0.805	1256.709	0.06%	99.35%
79.0	7.175	0.784	1257.493	0.06%	99.42%
80.0	6.961	0.762	1258.255	0.06%	99.48%
81.0	6.760	0.742	1258.997	0.05%	99.53%
82.0	6.573	0.723	1259.72	0.05%	99.59%
83.0	6.366	0.703	1260.424	0.05%	99.65%
84.0	6.200	0.685	1261.108	0.05%	99.70%
85.0	6.027	0.667	1261.775	0.05%	99.75%
86.0	5.874	0.651	1262.426	0.05%	99.81%
87.0	5.750	0.636	1263.062	0.05%	99.86%
88.0	5.639	0.624	1263.686	0.05%	99.90%
89.0	5.452	0.608	1264.294	0.04%	99.95%
90.0	5.404	0.595	1264.889	0.04%	100.00%

ZONAL LUMEN SUMMARY

Zone	Lumens	%Lamp	%Fixt
0-30	1077.16	77.77%	85.16%
0-40	1200.37	86.67%	94.90%
0-60	1238.91	89.45%	97.95%
0-90	1264.29	91.28%	99.95%
0-120	1264.29	91.28%	99.95%
0-180	1264.89	91.33%	100.00%
60-90	25.38	1.83%	2.01%
90-120	0.00	0.00%	0.00%
90-130	0.00	0.00%	0.00%
90-150	0.00	0.00%	0.00%
90-180	0.00	0.00%	0.00%
0-28.00	1011.91	73.06%	80.00%

ZONAL LUMEN SUMMARY

0-10	182.80
10-20	459.80
20-30	434.57
30-40	123.21
40-50	24.48
50-60	14.06
60-70	10.76
70-80	8.58
80-90	6.04
90-100	0.00
100-110	0.00
110-120	0.00
120-130	0.00
130-140	0.00
140-150	0.00
150-160	0.00
160-170	0.00
170-180	0.00



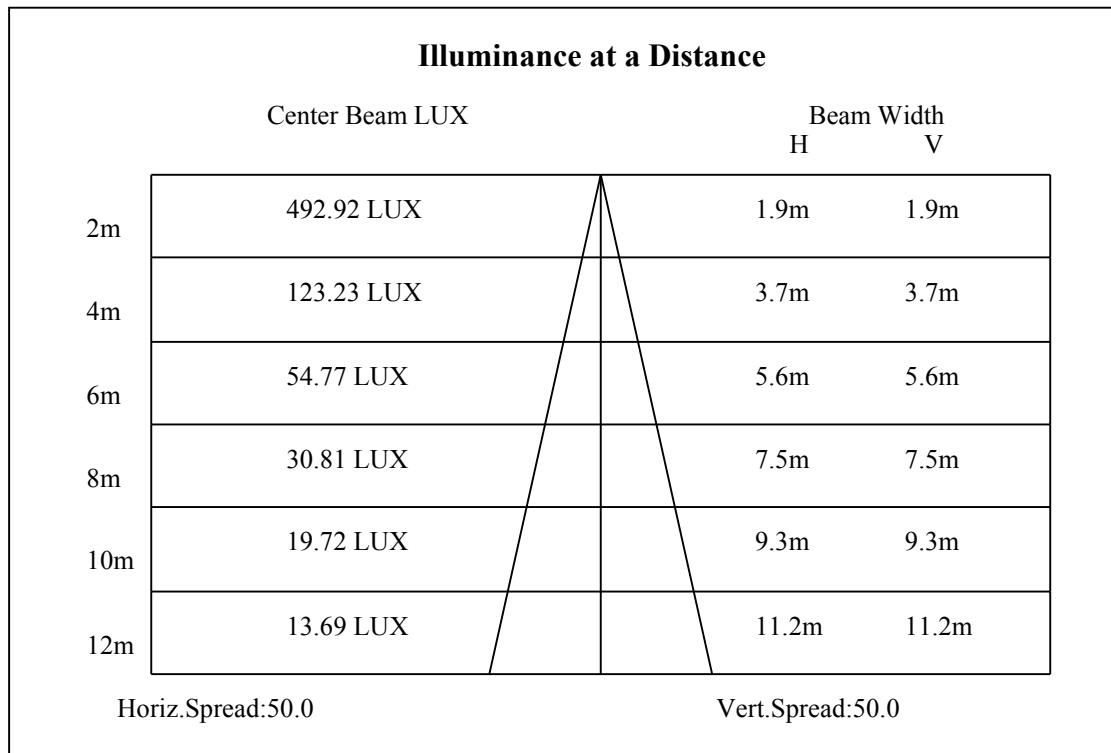
C0(Max): —————

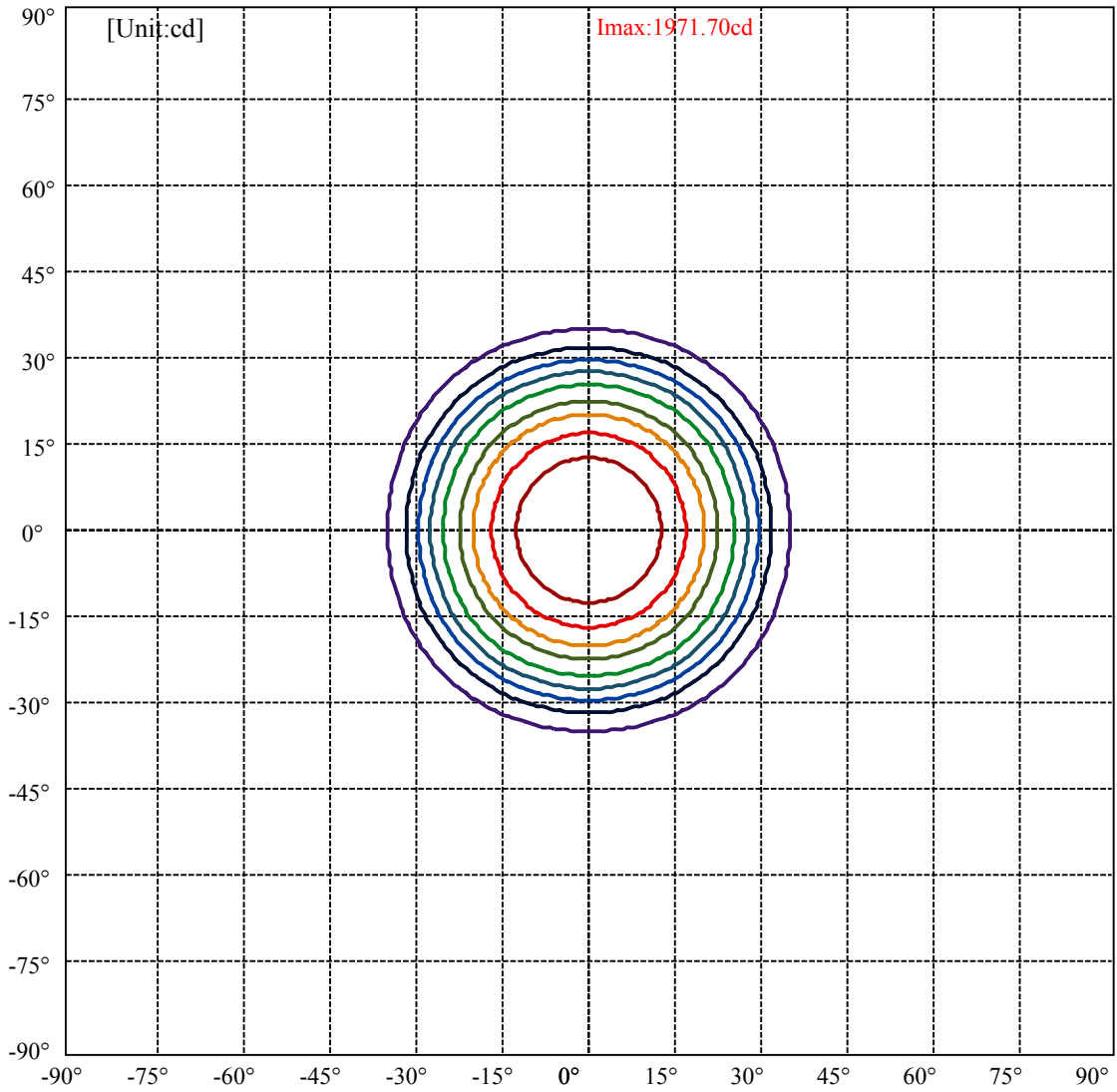
C0/C180: —————

C90/C270: —————

Field angle(10%Imax):C0/180Left:34.6 Right:34.6  
:C90/270Left:34.6 Right:34.6

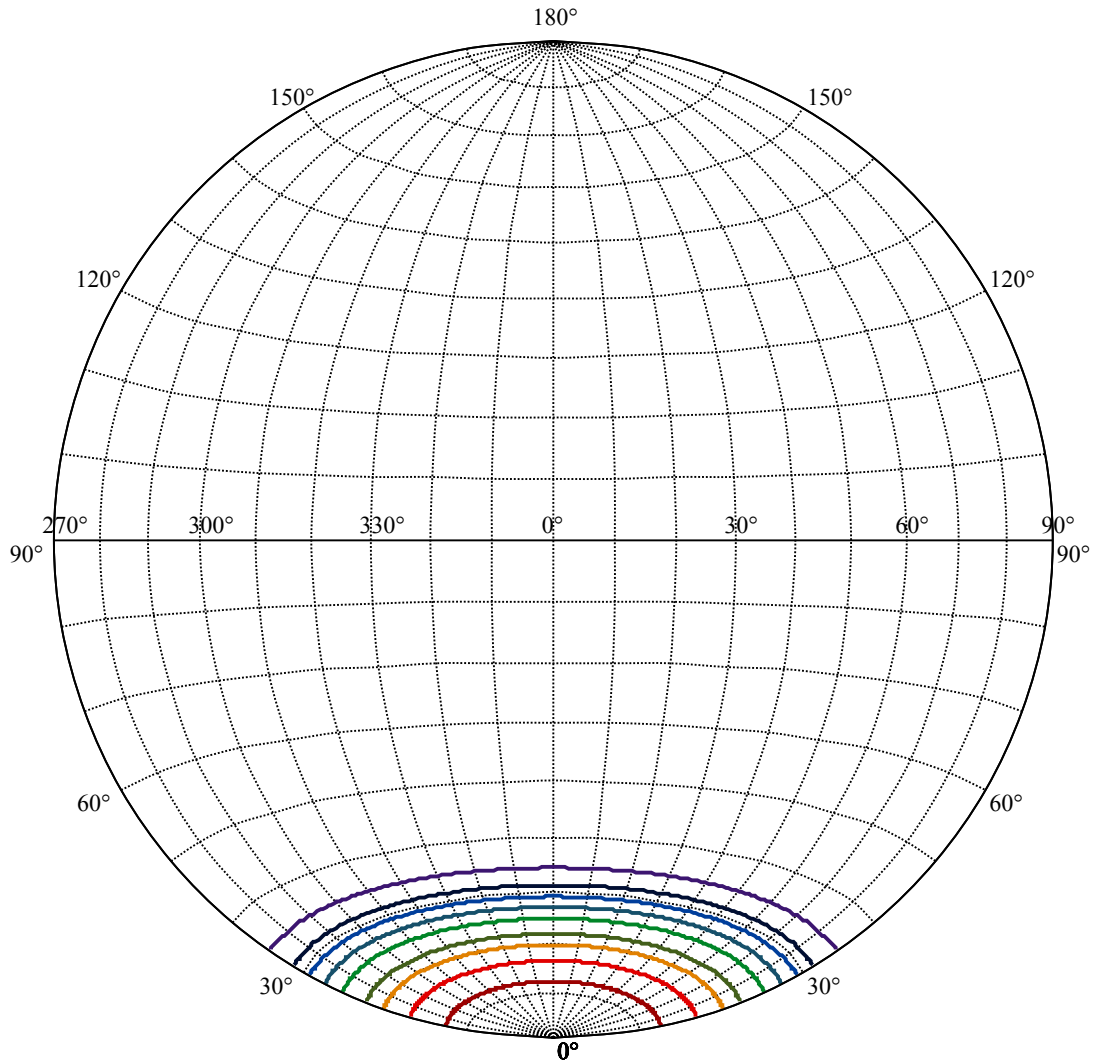
Beam Angle(50%Imax):C0/180Left:25.0 Right:25.0  
:C90/270Left:25.0 Right:25.0





(10%Imax) 197.17	—
(20%Imax) 394.339	—
(30%Imax) 591.509	—
(40%Imax) 788.678	—
(50%Imax) 985.848	—
(60%Imax) 1183.02	—
(70%Imax) 1380.19	—
(80%Imax) 1577.36	—
(90%Imax) 1774.53	—





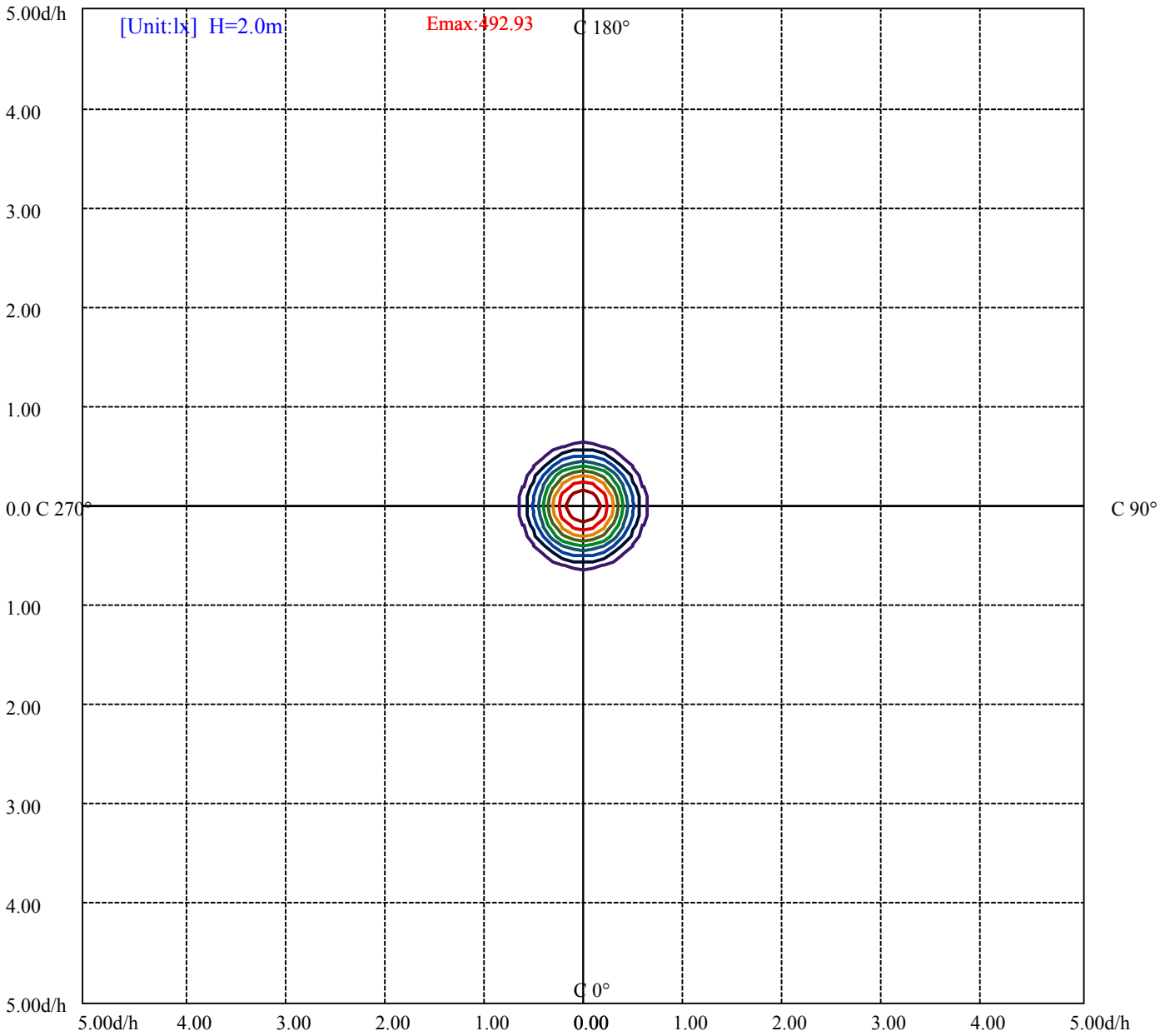
House

[Unit:cd]

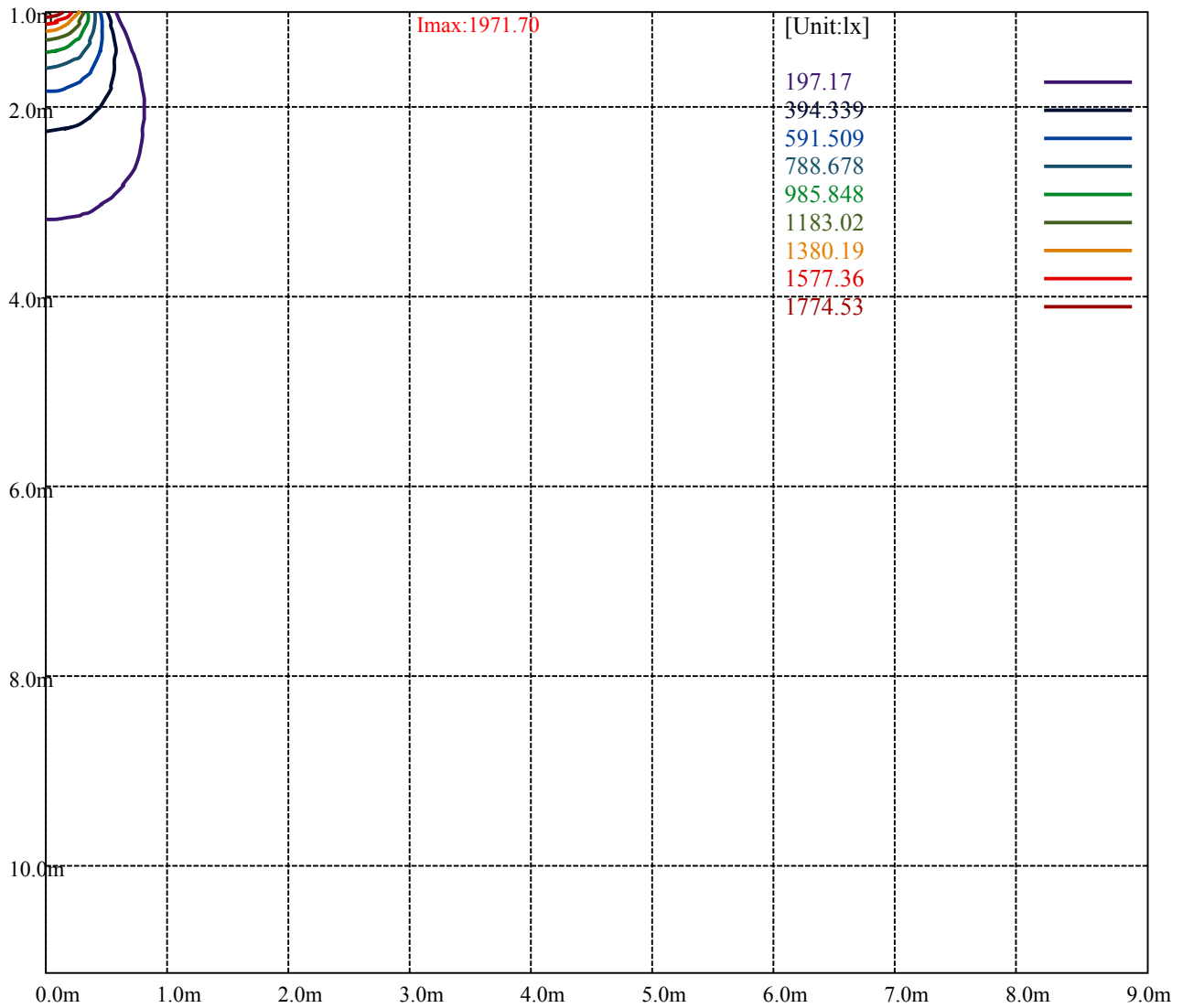
Road

Imax:1971.70

(10%Imax)	197.17	—
(20%Imax)	394.339	—
(30%Imax)	591.509	—
(40%Imax)	788.678	—
(50%Imax)	985.848	—
(60%Imax)	1183.02	—
(70%Imax)	1380.19	—
(80%Imax)	1577.36	—
(90%Imax)	1774.53	—



(10%Emax) 49.2925	—
(20%Emax) 98.58475	—
(30%Emax) 147.8772	—
(40%Emax) 197.1695	—
(50%Emax) 246.462	—
(60%Emax) 295.755	—
(70%Emax) 345.0475	—
(80%Emax) 394.34	—
(90%Emax) 443.6325	—



Luminance Table

$\gamma$	45	50	55	60	65	70	75	80	85
C0	0	0	0	0	0	0	0	0	0
C45	0	0	0	0	0	0	0	0	0
C90	0	0	0	0	0	0	0	0	0

L(Hor)(65)	L(Ver)(65)	L45(65)	L(Hor)(75)	L(Ver)(75)	L45(75)	L(Hor)(85)	L(Ver)(85)	L45(85)
0	0	0	0	0	0	0	0	0

Glare Table

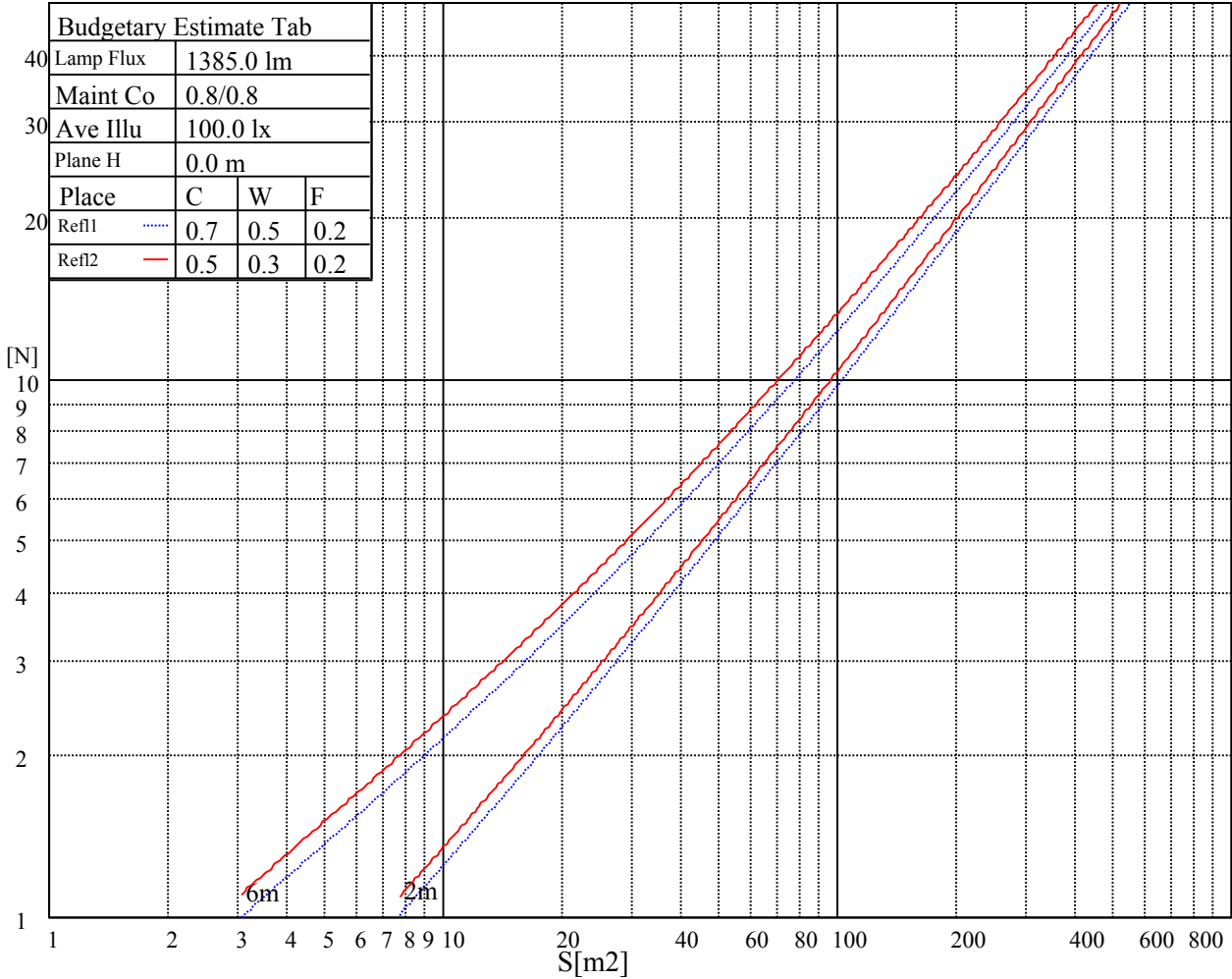
Glare	Quality	Service Values Illuminance(lx)							
1.15	A	2000	1000	500	<=300				
1.5	B		2000	1000	500	<=300			
1.85	C			2000	1000	500	<=300		
2.2	D				2000	1000	500	<=300	
2.55	E					2000	1000	500	<=300
		a	b	c	d	e	f	g	h

Luminance Limiting Curve

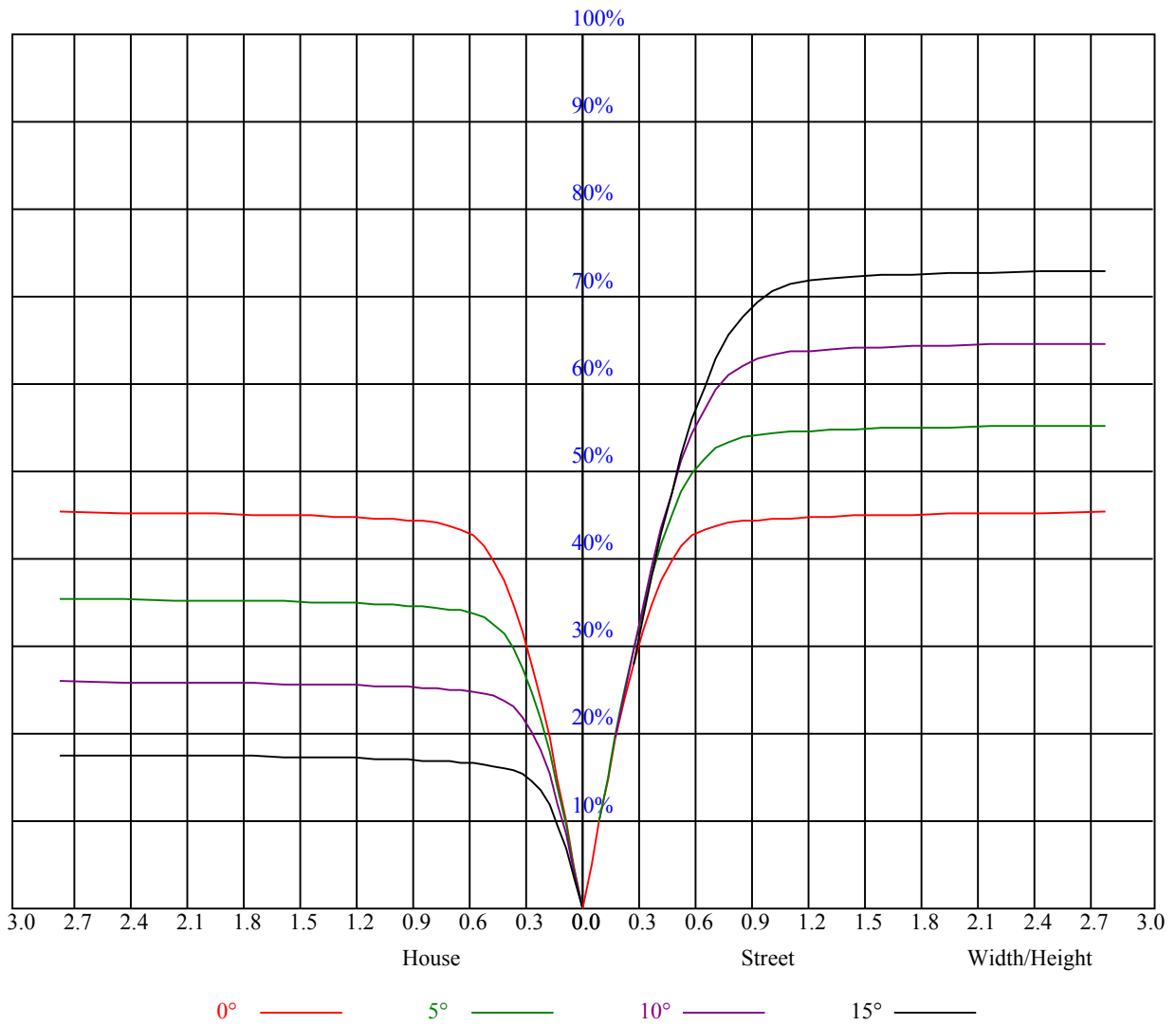


Illumination assessment according UGR											
Rf of Ceiling	70	70	50	50	30	70	70	50	50	30	
Rf of Wall	50	30	50	30	30	50	30	50	30	30	
Rf of Floor	20	20	20	20	20	20	20	20	20	20	
Room dimensions		Viewed crosswise					Viewed endwise				
X	Y										
2H	2H	非数字	非数字	非数字	非数字	非数字	非数字	非数字	非数字	非数字	
	3H	非数字	非数字	非数字	非数字	非数字	非数字	非数字	非数字	非数字	
	4H	非数字	非数字	非数字	非数字	非数字	非数字	非数字	非数字	非数字	
	6H	非数字	非数字	非数字	非数字	非数字	非数字	非数字	非数字	非数字	
	8H	非数字	非数字	非数字	非数字	非数字	非数字	非数字	非数字	非数字	
4H	12H	非数字	非数字	非数字	非数字	非数字	非数字	非数字	非数字	非数字	
	2H	非数字	非数字	非数字	非数字	非数字	非数字	非数字	非数字	非数字	
	3H	非数字	非数字	非数字	非数字	非数字	非数字	非数字	非数字	非数字	
	4H	非数字	非数字	非数字	非数字	非数字	非数字	非数字	非数字	非数字	
	6H	非数字	非数字	非数字	非数字	非数字	非数字	非数字	非数字	非数字	
8H	8H	非数字	非数字	非数字	非数字	非数字	非数字	非数字	非数字	非数字	
	12H	非数字	非数字	非数字	非数字	非数字	非数字	非数字	非数字	非数字	
	4H	非数字	非数字	非数字	非数字	非数字	非数字	非数字	非数字	非数字	
	6H	非数字	非数字	非数字	非数字	非数字	非数字	非数字	非数字	非数字	
	8H	非数字	非数字	非数字	非数字	非数字	非数字	非数字	非数字	非数字	
12H	12H	非数字	非数字	非数字	非数字	非数字	非数字	非数字	非数字	非数字	
	4H	非数字	非数字	非数字	非数字	非数字	非数字	非数字	非数字	非数字	
	6H	非数字	非数字	非数字	非数字	非数字	非数字	非数字	非数字	非数字	
8H	非数字	非数字	非数字	非数字	非数字	非数字	非数字	非数字	非数字		
Variation with the observer position at spacings:											
S = 1.0H	非数字/非数字					非数字/非数字					
S = 1.5H	非数字/非数字					非数字/非数字					
S = 2.0H	非数字/非数字					非数字/非数字					
Standard tables:	BK0					BK0					
Uncorrected UGR	负无穷大					负无穷大					

UGR calculation is based on CIE Publ. 117 ,S/H = 0.25



RHOCC	80			70			50			30			10			0
RHOW	50	30	10	50	30	10	50	30	10	50	30	10	50	30	10	0
RCR	COEFFICIENTS OF UTILIZATION RHOFC=20 CU															
0	1.09	1.09	1.09	1.06	1.06	1.06	1.01	1.01	1.01	0.97	0.97	0.97	0.93	0.93	0.93	0.91
1	1.01	0.99	0.97	0.99	0.97	0.96	0.96	0.94	0.93	0.92	0.91	0.90	0.89	0.88	0.87	0.86
2	0.95	0.91	0.89	0.93	0.90	0.88	0.90	0.88	0.86	0.88	0.86	0.84	0.85	0.84	0.82	0.81
3	0.89	0.85	0.82	0.88	0.84	0.81	0.86	0.82	0.80	0.83	0.81	0.78	0.81	0.79	0.77	0.76
4	0.84	0.80	0.76	0.83	0.79	0.76	0.81	0.78	0.75	0.79	0.76	0.74	0.78	0.75	0.73	0.72
5	0.80	0.75	0.71	0.79	0.74	0.71	0.77	0.73	0.70	0.76	0.72	0.70	0.74	0.71	0.69	0.68
6	0.76	0.71	0.67	0.75	0.70	0.67	0.74	0.69	0.66	0.72	0.69	0.66	0.71	0.68	0.65	0.64
7	0.72	0.67	0.63	0.71	0.66	0.63	0.70	0.66	0.63	0.69	0.65	0.62	0.68	0.65	0.62	0.61
8	0.68	0.63	0.60	0.68	0.63	0.60	0.67	0.63	0.60	0.66	0.62	0.59	0.65	0.62	0.59	0.58
9	0.65	0.60	0.57	0.65	0.60	0.57	0.64	0.60	0.57	0.63	0.59	0.56	0.62	0.59	0.56	0.55
10	0.62	0.57	0.54	0.62	0.57	0.54	0.61	0.57	0.54	0.60	0.57	0.54	0.60	0.56	0.54	0.53





Intensity data(cd)

C/γ(°)	0.0	1.0	2.0	3.0	4.0	5.0	6.0	7.0	8.0
0.0	1970.59	1967.27	1964.50	1950.66	1940.70	1926.31	1906.93	1881.47	1853.24
45.0	1972.25	1970.59	1968.93	1965.61	1956.20	1949.00	1938.48	1916.34	1896.97
90.0	1973.36	1976.12	1970.59	1962.84	1953.98	1940.70	1931.84	1915.23	1895.86
135.0	1970.59	1975.02	1972.25	1970.59	1969.48	1961.18	1952.32	1943.46	1928.52
180.0	1970.59	1972.25	1973.36	1965.61	1960.07	1950.66	1949.00	1944.57	1930.18
225.0	1972.25	1966.71	1958.96	1953.98	1946.23	1936.82	1929.07	1917.45	1891.43
270.0	1973.36	1972.80	1967.27	1963.39	1958.96	1946.79	1938.48	1931.84	1909.70
315.0	1970.59	1966.71	1960.62	1957.30	1951.21	1934.61	1925.75	1906.38	1882.02
360.0	1970.59	1967.27	1964.50	1950.66	1940.70	1926.31	1906.93	1881.47	1853.24
C/γ(°)	9.0	10.0	11.0	12.0	13.0	14.0	15.0	16.0	17.0
0.0	1823.90	1796.78	1760.80	1723.71	1673.34	1625.74	1577.02	1528.31	1455.80
45.0	1872.06	1851.02	1825.56	1784.60	1746.96	1706.55	1661.72	1601.93	1552.67
90.0	1878.15	1842.17	1806.74	1772.98	1735.89	1681.64	1636.81	1577.02	1523.88
135.0	1909.70	1894.20	1870.40	1842.17	1801.76	1765.78	1721.50	1665.59	1614.66
180.0	1914.68	1896.41	1874.27	1852.68	1816.15	1782.94	1750.28	1711.53	1658.39
225.0	1875.38	1851.58	1816.71	1786.81	1748.62	1704.34	1659.50	1616.33	1566.51
270.0	1891.43	1869.29	1843.27	1807.30	1770.76	1733.12	1679.43	1633.48	1577.58
315.0	1853.24	1827.78	1801.21	1770.21	1732.57	1679.43	1633.48	1588.65	1521.12
360.0	1823.90	1796.78	1760.80	1723.71	1673.34	1625.74	1577.02	1528.31	1455.80
C/γ(°)	18.0	19.0	20.0	21.0	22.0	23.0	24.0	25.0	26.0
0.0	1396.02	1334.02	1250.99	1092.35	1092.35	1039.60	948.04	866.78	755.52
45.0	1500.64	1440.85	1362.81	1298.04	1213.90	1146.37	1075.52	984.74	907.80
90.0	1467.98	1392.14	1325.17	1255.42	1090.91	1090.91	1020.61	950.92	851.45
135.0	1562.63	1506.17	1419.82	1353.40	1282.54	1209.48	1115.93	1039.54	941.01
180.0	1611.90	1555.99	1492.33	1421.48	1337.90	1265.94	1186.23	1095.45	1022.38
225.0	1498.98	1435.87	1372.77	1304.13	1100.93	1100.93	1065.22	992.82	897.45
270.0	1533.85	1474.07	1411.52	1327.38	1262.06	1191.21	1119.25	1029.02	963.15
315.0	1463.55	1397.68	1334.02	1200.07	1097.50	1097.50	1013.80	941.84	862.91
360.0	1396.02	1334.02	1250.99	1092.35	1092.35	1039.60	948.04	866.78	755.52
C/γ(°)	27.0	28.0	29.0	30.0	31.0	32.0	33.0	34.0	35.0
0.0	663.86	571.36	460.10	376.74	301.40	235.42	178.79	125.10	97.64
45.0	823.66	702.44	608.34	520.32	435.63	358.14	286.73	286.73	154.82
90.0	761.67	667.45	571.69	459.99	375.46	298.63	231.21	163.51	124.21
135.0	856.32	766.09	648.19	556.30	466.08	381.94	285.62	285.62	205.75
180.0	919.42	836.39	746.17	632.14	539.70	447.81	364.23	288.95	288.95
225.0	813.75	721.81	602.80	510.19	402.20	324.87	254.68	193.79	134.90
270.0	882.34	775.50	689.15	596.16	480.47	396.89	318.28	282.86	282.86
315.0	756.91	664.52	575.07	486.61	381.55	305.33	237.80	179.46	124.66
360.0	663.86	571.36	460.10	376.74	301.40	235.42	178.79	125.10	97.64
C/γ(°)	36.0	37.0	38.0	39.0	40.0	41.0	42.0	43.0	44.0
0.0	81.31	70.08	58.95	52.03	44.73	40.08	36.09	31.77	28.89
45.0	111.15	89.51	75.95	63.60	56.18	48.71	43.56	39.02	35.26
90.0	92.94	78.38	67.25	57.18	50.70	45.22	40.57	35.54	32.16
135.0	119.73	88.18	74.12	63.99	55.96	48.21	42.95	37.42	33.65
180.0	155.27	116.02	89.78	71.41	61.66	52.53	46.50	41.35	35.92
225.0	103.40	82.98	70.74	59.45	52.92	47.05	40.85	36.75	33.27
270.0	129.25	93.44	76.78	65.82	57.18	48.99	43.56	38.91	35.09
315.0	96.48	79.10	65.26	56.52	49.49	42.46	38.14	33.54	30.44
360.0	81.31	70.08	58.95	52.03	44.73	40.08	36.09	31.77	28.89

Intensity data(cd)

C/γ(°)	45.0	46.0	47.0	48.0	49.0	50.0	51.0	52.0	53.0
0.0	26.40	23.86	22.31	20.98	19.76	18.49	17.55	16.77	16.05
45.0	31.22	28.62	26.29	24.36	22.36	21.03	19.87	18.82	17.66
90.0	29.23	26.79	24.30	22.75	21.37	19.87	18.82	17.66	16.88
135.0	30.44	26.96	24.74	22.86	20.98	19.76	18.60	17.66	16.61
180.0	32.33	29.28	26.07	23.97	22.25	20.87	19.37	18.38	17.44
225.0	29.61	27.12	25.02	22.97	21.59	20.37	19.26	17.99	17.16
270.0	31.11	28.45	26.13	23.80	22.31	20.98	19.60	18.54	17.66
315.0	27.73	25.41	23.03	21.59	20.31	19.26	17.99	17.10	16.33
360.0	26.40	23.86	22.31	20.98	19.76	18.49	17.55	16.77	16.05
C/γ(°)	54.0	55.0	56.0	57.0	58.0	59.0	60.0	61.0	62.0
0.0	15.22	14.61	14.00	13.51	13.01	12.51	12.12	11.79	11.46
45.0	16.83	15.94	15.28	14.67	14.00	13.51	13.06	12.45	12.07
90.0	16.11	15.44	14.72	14.17	13.67	13.17	12.68	12.23	11.90
135.0	15.89	15.22	14.61	13.95	13.45	13.01	12.51	12.18	11.73
180.0	16.61	15.72	15.11	14.50	13.89	13.40	12.90	12.51	12.12
225.0	16.38	15.67	14.89	14.34	13.84	13.23	12.79	12.29	11.90
270.0	16.66	15.94	15.28	14.67	14.00	13.56	13.06	12.62	12.12
315.0	15.67	14.89	14.34	13.67	13.23	12.79	12.29	11.90	11.57
360.0	15.22	14.61	14.00	13.51	13.01	12.51	12.12	11.79	11.46
C/γ(°)	63.0	64.0	65.0	66.0	67.0	68.0	69.0	70.0	71.0
0.0	11.02	10.74	10.46	10.13	9.85	9.58	9.35	9.08	8.80
45.0	11.73	11.35	11.02	10.63	10.35	10.02	9.74	9.47	9.19
90.0	11.51	11.13	10.79	10.35	10.13	9.85	9.58	9.24	9.02
135.0	11.40	11.07	10.79	10.41	10.13	9.96	9.74	9.41	9.19
180.0	11.73	11.35	11.02	10.74	10.41	10.13	9.85	9.63	9.41
225.0	11.57	11.07	10.74	10.46	10.19	9.85	9.58	9.35	9.08
270.0	11.73	11.40	10.96	10.63	10.24	9.96	9.74	9.41	9.19
315.0	11.24	10.85	10.57	10.19	10.02	9.69	9.41	9.19	8.91
360.0	11.02	10.74	10.46	10.13	9.85	9.58	9.35	9.08	8.80
C/γ(°)	72.0	73.0	74.0	75.0	76.0	77.0	78.0	79.0	80.0
0.0	8.58	8.30	8.08	7.75	7.58	7.36	7.14	6.92	6.70
45.0	8.91	8.69	8.47	8.19	7.92	7.75	7.53	7.25	7.03
90.0	8.75	8.52	8.30	8.08	7.75	7.53	7.36	7.14	6.86
135.0	8.91	8.69	8.41	8.19	7.97	7.75	7.53	7.25	7.03
180.0	9.13	8.86	8.58	8.36	8.14	7.86	7.64	7.42	7.20
225.0	8.80	8.58	8.36	8.03	7.80	7.53	7.36	7.14	6.97
270.0	8.91	8.69	8.41	8.19	7.92	7.75	7.47	7.25	7.03
315.0	8.69	8.47	8.19	7.97	7.75	7.47	7.25	7.03	6.86
360.0	8.58	8.30	8.08	7.75	7.58	7.36	7.14	6.92	6.70
C/γ(°)	81.0	82.0	83.0	84.0	85.0	86.0	87.0	88.0	89.0
0.0	6.53	6.37	6.14	5.98	5.92	5.76	5.65	5.42	5.48
45.0	6.81	6.59	6.37	6.20	6.03	5.87	5.76	5.59	5.42
90.0	6.75	6.53	6.31	6.14	5.92	5.81	5.70	5.70	5.37
135.0	6.86	6.70	6.42	6.25	6.09	5.92	5.81	5.70	5.54
180.0	6.97	6.75	6.59	6.42	6.14	6.03	5.92	5.76	5.59
225.0	6.70	6.53	6.37	6.20	6.03	5.81	5.70	5.70	5.37
270.0	6.81	6.64	6.42	6.25	6.09	5.98	5.76	5.59	5.48
315.0	6.64	6.48	6.31	6.14	5.98	5.81	5.70	5.65	5.37
360.0	6.53	6.37	6.14	5.98	5.92	5.76	5.65	5.42	5.48

Intensity data(cd)

<b>C/γ(°)</b>	<b>90.0</b>
<b>0.0</b>	<b>5.42</b>
<b>45.0</b>	<b>5.37</b>
<b>90.0</b>	<b>5.42</b>
<b>135.0</b>	<b>5.42</b>
<b>180.0</b>	<b>5.37</b>
<b>225.0</b>	<b>5.42</b>
<b>270.0</b>	<b>5.37</b>
<b>315.0</b>	<b>5.42</b>
<b>360.0</b>	<b>5.42</b>